

## Village Highlights

### Monday, April 1<sup>st</sup>

2pm in the PAC. Join former NBMAA Curator, Steve Miller, for his presentation on the Enfield Shakers' history and furniture.

### Saturday, April 13<sup>th</sup>

2pm in the PAC. McLean Presents: Saskia Laroo Jazz Quintet. Saskia is a Dutch musician who has been referred to as the "Lady Miles Davis." Join us for a concert blending jazz, blues, and soul. Sign up in the book required.

### Monday, April 15<sup>th</sup>

4pm in the G&Q. Trivia and Happy Hour with Jesse! Come test your knowledge, enjoy some great music, and have fun with friends.

### Sunday, April 21<sup>st</sup>

2pm in the PAC. McLean Presents: "My Fair Lady" a musical revue directed by Michael Yachanin. Sign up in the book required.

### Thursday, April 25<sup>th</sup>

2pm in the PAC. University of Hartford Presidents' College presents: "Denizens of the Deep and Shallow – Harbingers of Climate Change."

## Dining Highlights

### Saturday, April 21<sup>st</sup>

Benedict's Pop-up restaurant for Sunday Brunch in the Burkholder.

## The Pines Restaurant - Lunch Menu

Hours: 11:30 am–1:30 pm Monday - Saturday

- **Soup Du Jour**  
*Small (8 oz.) or Large (12 oz.)*
  - **Flame Grilled Burgers Made to Order**  
*Served on a Toasted Kaiser Roll with a Pickle. Your Choice of Cheese, Lettuce, Tomato, Sliced Onion, Ketchup, Mustard, Mayo*
  - **Beef, Turkey, Impossible, Veggie Grilled Sandwiches**  
*Choose from our Cold Case and Have Chef Grill or Panini Press. Served on a Toasted Roll with a Pickle*
  - **All Beef Hot Dog**  
*Your Choice of Diced Onion, Ketchup, Mustard, Relish*
  - **Balsamic Grilled Chicken Breast**  
*Your Choice of Cheese, Lettuce, Tomato, Mustard, Mayo*
  - **Classic Grilled Cheese**  
*Your Choice of American, Cheddar, Swiss, or Provolone, White Wheat, Rye, or Gluten Free Bread. Lettuce, Tomato, Bacon*
- Sides**  
*Onion Rings, French Fries, House Made Chips*
- Beverages**  
*Fountain Soda (Coke, Diet Coke, Ginger Ale, Orange, Root Beer) Minute Maid Juice (Orange, Cranberry, Apple, Lemonade)*

Wednesday night dinners will be served in the Burkholder Restaurant and in the Pines.

Sunday Brunch is served in the Burkholder Restaurant. On Sundays, the Pines will be open 7am–7pm, however, 2pm–7pm is for Grab and Go Only.

The Goodrich Map/ Location/Abbreviation Key

<b>The Burkholder</b>	HR Hartford Room	<b>The Health Center</b>
BR Burkholder Restaurant	LC Library Connector	CC Carling Chapel
CR Card Room	RN Reading Nook	HC Health Center
GQ Grouse & Quail	TR The Refuge	
H Harbor Room		

McLean



# The Village Newsletter

BOUNDLESS

April 2024

## FROM THE DESK OF THE DIRECTOR

### Welcome Spring!

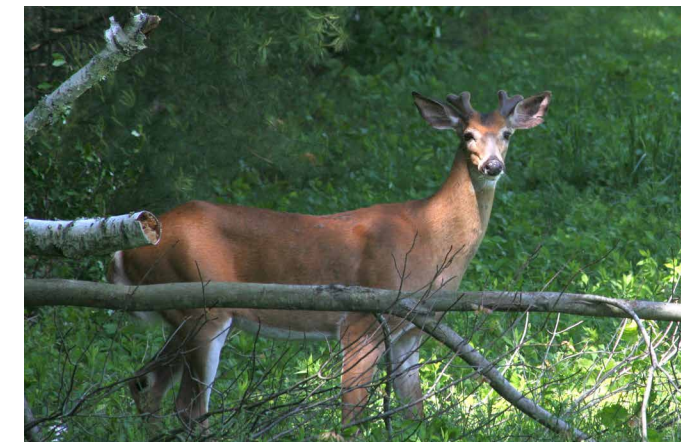
Spring is a beautiful time of year – I always look forward to seeing the fresh buds on the trees and the beautiful daffodils and tulips.

In April we celebrate mother earth with Earth Day on April 22. In the spirit of being stewards of our environment, McLean is hosting a **paper shredding event on Saturday, April 20**, from 9AM till noon. Residents and the community are invited to "drive thru" with up to four bags of materials for shredding. All the details will be communicated to you soon. I know I will be doing some "spring cleaning" and sorting through my paperwork at home to see what I can safely dispose of on the 20th!

I hope everyone is able to stop and take a moment to enjoy the Spring, and all the beauty it offers.


*Megan Gill*

Megan Gill, Director of McLean Village



# April 2024

McLeanCare.org

Sunday	Monday	Tuesday	Wednesday	Thursday	Friday	Saturday
<p><b>Village Events Hotline</b> 860-658-3939 (Please Call for Daily Updates and Activities)</p> <p><b>Campus Update</b> Wednesdays 1:00 (PAC/Virtual)</p>	<p><b>2:00 Former NBMAA Curator Steve Miller: Presentation on Enfield Shakers' History and Furniture (PAC)</b> <b>1</b></p> <p>7:00 Poker at the Round Tables (GL)</p>	<p>1:00 Mexican Train (CR) <b>2</b></p>	<p>10:00-12:00 Village Gift Shop (GQ) <b>3</b></p> <p>1:00 Campus Update (PAC and virtual)</p> <p>2:30 Great Courses: The Nature of Earth: An Introduction to Geology (HR)</p> <p>4:00 Happy Hour (GQ)</p>	<p>9:45 Parkies &amp; Friends (HR) <b>4</b></p> <p>11:00 Hooks N Needles (GL)</p> <p>1:00 Scrabble (CR)</p>	<p>1:00 Mahjong (GQ) <b>5</b></p> <p>1:00 Movie: "Roman Holiday" (PAC)</p> <p>4:00 smART Reception (CAC)</p>	<p>Farmington Valley Chorale presents "Rising Up: Handel's Story of Joseph and His Brethren." Van departs at 6:00 pm from GL. Sign up in the book required. <b>6</b></p>
 <p><b>7</b></p>	<p>1:30 Bean Bag Toss (HR) <b>8</b></p> <p>7:00 Poker at the Round Tables (GL)</p>	<p>10:00 "Sew Smart" (CON) <b>9</b></p> <p>2:00 Music Makers (PAC)</p>	<p>10:00-12:00 Village Gift Shop (GQ) <b>10</b></p> <p>1:00 Campus Update (PAC and virtual)</p> <p>2:30 Great Courses: The Nature of Earth: An Introduction to Geology (HR)</p> <p>4:00 Happy Hour (GQ)</p>	<p>11:00 Conversations Continued w/Lyn (HR) <b>11</b></p> <p>11:00 Hooks N Needles (GL)</p> <p>2:00 "African Violets 101" with Ruth Hoffman (HR) Sign up in the book required.</p>	<p>9:30 Ladies' Coffee (RD) <b>12</b></p> <p>10:00 Dementia Caregiver Support Group (CON)</p> <p>1:00 Mahjong (GQ)</p> <p>1:00 Movie: "Rain Man" (PAC)</p> <p>4:00 Welcome New Residents Happy Hour (GL)</p>	<p>2:00 McLean Presents: Saskia Laroo Jazz Quintet (PAC) Sign up in the book required. <b>13</b></p>
 <p><b>14</b></p>	<p><b>10:00 Coffee and Conversations with the Hospice Team (HR)</b> <b>15</b></p> <p>11:00 History Group (HR)</p> <p>1:00 Podiatrist (TH) Appointments required.</p> <p>4:00 Trivia &amp; Happy Hour with Jesse (GQ)</p> <p>7:00 Poker at the Round Tables (GL)</p>	<p>1:00 Mexican Train (CR) <b>16</b></p> <p>2:00 Music Makers (PAC)</p>	<p>10:00-12:00 Village Gift Shop (GQ) <b>17</b></p> <p>1:00 Campus Update (PAC and virtual)</p> <p>1:30 Podiatrist (TH) Appointments required.</p> <p>2:30 Great Courses: The Nature of Earth: An Introduction to Geology (HR)</p> <p>4:00 Happy Hour (GQ)</p>	<p>9:45 Parkies and Friends (HR) <b>18</b></p> <p>11:00 Hooks N Needles (GL)</p> <p>1:00 Scrabble (CR)</p>	<p>11:00 Book Group (HR) <b>19</b></p> <p>1:00 Mahjong (GQ)</p> <p>1:00 Movie: "Maestro" (PAC)</p>	<p>9:00 - 12:00 Shredding Event (location TBD) <b>20</b></p> <p>10:00 - 12:00 Assisted Living Open House (HC) (shuttle is not available)</p>
<p>2:00 McLean Presents: "My Fair Lady" A Musical Revue by Michael Yachanin (PAC) Sign up in the book required. <b>21</b></p>	<p>1:00 Documentary Viewing of "An Inconvenient Truth" (PAC) <b>22</b></p> <p>1:00 Molkky (HR)</p> <p>7:00 Poker at the Round Tables (GL)</p>	<p>10:00 "Sew Smart" (CON) <b>23</b></p> <p>11:00 Veterans Group Meeting (HR)</p> <p>2:00 Music Makers (PAC)</p>	<p>10:00 - 12:00 Village Gift Shop (GQ) <b>24</b></p> <p>1:00 Campus Update (PAC/Virtual)</p> <p>1:30 Dining Forum (PAC)</p> <p>2:30 Great Courses: Museum Masterpieces (HR)</p> <p>4:00 Happy Hour (GQ)</p>	<p>11:00 Hooks N Needles (GL) <b>25</b></p> <p>2:00 UHart Presidents' College: "Denizens of the Deep and Shallow - Harbingers of Climate Change" (PAC) Sign up in the book required.</p> <p>2:15-3:45 Drop-in Hours with Ann (CON)</p> <p>6:00 CT Alzheimer's Assoc. presents The Impact of Alzheimer's (PAC) Sign up with Marketing required by 4/22.</p>	<p>9:30 Men's Coffee (RD) <b>26</b></p> <p>1:00 Mahjong (GQ)</p> <p>1:00 Movie: "A Million Miles Away" (PAC)</p>	 <p><b>27</b></p>
 <p><b>28</b></p>	<p>2:00 Holcomb Farm Presentation on Its Tree Trail Project (PAC) <b>29</b></p> <p>7:00 Poker at the Round Tables (GL)</p>	<p>2:00 Music Makers (PAC) <b>30</b></p>			